



# XPS

XPS One Reviewer's Guide





## The XPS® One™ – Everything a Desktop Isn't

One cord. One unit. One transformation. A gorgeous machine with abundant possibilities. High-def entertainment, XPS performance and simple setup – the XPS One is here.

**All-in-One:** XPS performance, advanced entertainment, and visually stunning industrial come together in the XPS One. With powerful Intel® processors, up to 2GB of memory and advanced graphics support, plus an optional integrated High-def TV tuner and Blu-ray Disc™ drive, the XPS One combines the functionality of a multimedia PC, 20" HDTV, DVR, CD/DVD/BD player & recorder, component stereo system, video phone, game console, and media library.

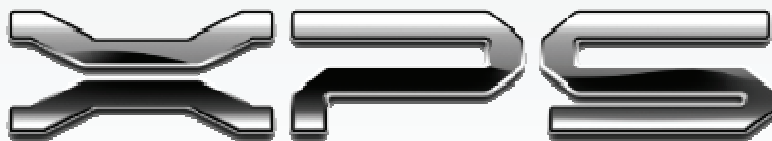
**Lavish Frugality:** By eliminating the need for separate components, each with their own chassis, power supply, electronics, user interface, cables, and expenses for packaging, shipping, marketing and support; the XPS One helps save space and cost and does this with grace and style.

**Object D' Envy:** The stunningly beautiful XPS One is finely finished front and back with iconic lines, a bezel-less display, and motion sensitive controls that seem to anticipate your intent and glow blue when your hand approaches. Its 360 degrees of sculpted eye candy proudly makes a fashion statement to declare, "I've arrived."

**Compact:** With the PC integrated inside a 20" widescreen flat-panel monitor, there's no need for separate components or wires that connect them; and as a result, the XPS One fits comfortably where space is constrained or tidiness is virtuous, such as in a dorm room or bedroom, on a glass desk in the middle of an elegant home office, or even on the countertop under kitchen cabinets.

**Clutter-free:** With one power cord, no monitor cable, an 8-in-1 media reader, built-in Wi-Fi® and Bluetooth®, and wireless keyboard and mouse; the XPS One is designed for minimal fuss and helps keep the desktop neat and tidy. Take it out of the box; plug it in; and you're ready to go.

**Convenient:** With integrated Wi-Fi, the XPS One can be placed virtually anywhere in the home without running network cabling. With internal Bluetooth 2.0, compatible peripherals like cell phones and stereo headsets can be connected without cable hassles. And easy access to the slot load drive, media reader, and side ports avoid crawling under the desk.



## Contents

Configuration Options	5	Surprise Me	23
XPS Brand Tenets & Positioning	6	Out-of-Box Experience	24
XPS One Key Benefits	7	Security & Anti-malware Software	25
Design Elements	8	Service & Support	26
Wireless Keyboard & Mouse	10	Dell Support Center	27
Proximity Detection	11	DellConnect™	28
Studio in a Box	12	Dell DataSafe™ Online	29
HD Audio, Movies & Television	13	Dell PC TuneUp	30
HD Content & Blu-ray Disc™	14	Dell CompleteCare™	31
HD Graphics & Video	15	Dell on Call	32
HD Home Network	16	Dell Network Assistant	33
HD Expansion	17	Dell Recycling	34
Intel® Dual-core Processors	18	Product Gallery Photos	35
Genuine Windows Vista®	19	Weight & Dimensions	41
Whole-Home Theater	20	Technical Specifications	42
Turn On and Tune In	21	Important Information	46
Listen Up	22	Return Information	47

## Configuration Options

### Dual-core Processors

- Intel® processors up to 45W
- Intel® Core™ 2 Duo E4500, 2.2GHz, 800MHz FSB, 2MB L2 cache, Viiv™ compatible
- Intel® Core™ 2 Duo E6550, 2.2GHz, 800MHz FSB, 2MB L2 cache, Viiv™ compatible
- Intel® Celeron® offered in Japan (440)

### Memory

- 1-2GB Dual-channel DDR2 (667MHz ) SDRAM\*  
2 DIMMs installed in pairs

### Hard Disk Storage

- One HDD bay for factory-installed SATA drive (3GB/s, 7200 RPM with Data Burst Cache)
- 250GB\* with 8MB cache
- 320GB\* with 16MB cache
- 500GB\* with 16MB cache

### Optical Storage

- One Slot-load, slim-line 5.25" SATA drive bay
- Standard DVD+/-RW with Dual Layer DVD+R write capacity
- Optional Blu-ray Disc™ with huge 50GB double layer capacity and ability to read & write CDs, DVDs and Blu-ray discs

### Networking

- Integrated Gigabit Ethernet LAN (10/100/1000Base-T)
- Dell internal Wi-Fi® (based on the 802.11 a/b/g/n draft 2.0 specification)

### Video & Advanced Graphics

- Intel® Graphics Media Accelerator 3100\* standard & integrated using Unified Memory Architecture (UMA) for sharing system memory
- Optional ATI Mobility Radeon® HD 2400\* Mobile PCI Express Module (MXM) with 128MB memory (Recommended for HDTV, Blu-ray Disc decoding and 3-D gaming)

### TV Tuner options

- Americas: Hybrid NTSC/ATSC
- Japan: Hybrid NTSC/ISDB-T (seg 13) + BCAS
- Europe/Japan: Hybrid PAL/SECAM/DVB-T
- TV Input Device (with tuner) includes S-video, analog RCA A/V jacks and IR blaster

### Audio Support

- Integrated Intel® High Definition (HD) Audio and Integrated stereo speakers (5W each) with support for external speakers

### Expansion & I/O

- Bluetooth® 2.0
- 6 USB 2.0 ports (2 side, 4 back)
- IEEE 1394a (2), S/PDIF, 2.1 Audio Out, microphone/headphone
- External HD via Gigabit Ethernet, USB or IEEE 1394a
- 200W power supply

### Operating System

- Microsoft® Windows Vista® Home Premium

## XPS Brand Tenets & Positioning

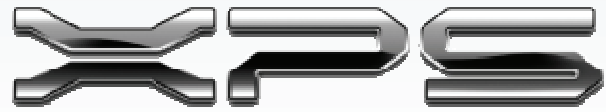
As Dell's flagship consumer brand, XPS systems are designed to deliver above and beyond Dell's Inspiron brand and command premium consideration. Consumers are attracted to the exacting design, technology innovation, and premium XPS ownership experience.

The various members of the XPS product family share a common heritage of excellence and are designed to be the best in their respective usage category, be it ultimate gaming, ultimate creativity, ultimate mobility, or ultimate styling – just as a luxury automotive brand can offer a sports coupe, sedan and SUV that differ in form, usage and appeal but share qualities important to the brand.

XPS products are intended to be aspirational and exclusive, yet obtainable, whereas the Inspiron brand is meant to be broadly appealing and accessible. From the first visual encounter, XPS designs go beyond the clean, fresh looks of Inspiron to something more aggressive, sophisticated or elegant. Premium materials, workmanship and quality offer more than just reliability. They offer the extraordinary.

The XPS brand opens the door to the latest technologies and components versus the more mainstream options, and some consumers are attracted to the leading edge features for superior investment protection versus Inspiron's purchase value. Finally, service & support for XPS systems is the best that Dell offers to consumers.

The XPS One epitomizes "exacting XPS design," establishes the Premium "XPS Lifestyle" category, and serves as a "halo" that helps extend the XPS brand beyond extreme gaming. Its lean forward (2') and lean back (5-10') user interface enables new usage scenarios; and its quiet operation, attractive back and lack of cable clutter enables new placement alternatives so XPS One owners can show it off.



## XPS One Key Benefits

**All-in-One** – Experience a full, rich world of digital multimedia. Add depth and fidelity to your music. Enhance and share your photos and home movies. Keep in touch with video calls. Watch TV on your terms and in high definition. And play games in vivid detail. Do this and more in one space- and cost-saving AIO PC.

**Cinematic** – Pair the 20" widescreen, flat panel display with side-mounted stereo speakers and an optional integrated analog/digital High-def TV tuner or a Blu-ray Disc™ drive, and the XPS One also functions as a high-style, high-end television and entertainment system.

**Iconic** – While desktop PCs are often pushed against a wall or hidden under the desk to hide cables and unfinished backsides, the XPS One is beautiful all around. The finely finished industrial design is a work of art and is ready to be proudly displayed.

**Uncluttered** – Wireless features and an 8-in-1 media reader help reduce cable clutter, and side ports enable quick cable connection of mobile devices. Cables connected to rear ports are managed to maintain the uncluttered look. And an external TV Input Device (with TV tuner option) moves additional A/V ports and IR blaster off of the desktop entirely.

**Responsive** – Equipped with proximity sensors, the XPS One almost anticipates your needs. Bring your hand close to the display, and light-touch media keys begin to glow. With the softest touch, they respond with light, sound and vibrations to register contact. Approach the system to insert a disc, and the drive slot lights.

**Pitch & Picture Perfect** – Edit photos, videos and music with the Adobe® Elements Studio for creative projects that shine. This exclusive, pre-installed Dell software package includes Adobe Photoshop® Elements 6, Adobe Premiere® Elements4, and pro-grade Adobe Soundbooth™ CS3.

### Unique Features

- Proximity sensors
- Light-touch media keys
- Adobe® Elements Studio



## Design Elements

Excite the senses and turn heads with this stylish blend of form, function and simplicity, which you can show off as a precious object or work of art.

**Sophisticated** – The iconic design, with the same subtle angle reflected throughout, was influenced by the simplicity of an Asian gardener's hat. Notice the balance and repetition of the angle.

**Thin** – Look down from the top and notice how the angled body allows thicker components to be pushed to the center to enhance the thinnest possible side view.

**Sturdy** – Reflecting the angle in the die-cast aluminum base adds strength and rigidity without bulk or weight and provides a channel for the color-matched power cord, which is designed to sit flush to the wall.

**Functional** – Integrated speakers are mounted on the sides and angled in slightly to accentuate the stereo separation and widescreen display profile, and to scream, "High-def TV."

**Cool & Quiet** – With no venting or ugly grills in the back, air flows from bottom to top to keep the system amazingly cool and quiet.



### Attention to Detail

- Thin Profile All-in-One
- Finely Finished Front & Back
- Design-optimized for HDTV
- Venting out the top







**Small Footprint** – The XPS One is perfect where space is at a premium, like in a dorm or bedroom, or in common areas such as the living room or kitchen for easy access. At just 16.5” tall, it even fits easily under kitchen cabinets that are hung 18-24” above the counter.

**Finished Back** – The XPS One is strikingly beautiful from every angle and seems to float above the desk on a smoked glass base, making it also ideal for placement on a modern glass table or desk in the center of a fine home office.

**Discrete Webcam** – Send recorded video messages to friends and family. Create a virtual presence with voice and video calls over the Internet. Represent yourself with fun avatars that animate to your speech. Adjust image preferences such as low light, and brightness. The 2M pixel CMOS image sensor, lens and face tracing mechanicals are positioned to capture the user but are so discrete that an LED lights when it's on.

**Microphone Array** – Clear and easy-to-understand audio is captured by two omnidirectional mics that enable beam forming, noise reduction and acoustic echo cancellation.

**Bezel-less Display** – The display is a single piece of glass, edge-to-edge and tempered for strength that appears to float in space above its die-cast aluminum stand and smoked glass base

**Wireless Keyboard & Mouse** – A pre-paired and design-matched wireless keyboard and mouse enable a casual 5-10' lean-back experience and a typical 2' lean-forward experience but without cable clutter.

## Wireless Keyboard & Mouse

**Pre-paired & Wireless** – A design-matched QWERTY keyboard and mouse reduce cable clutter during 2' lean-forward computing and have a range up to 5m to enable a casual 5-10' lean-back experience such as watching a movie from the bed.

**Pre-paired** – The keyboard and mouse use the license-free 2.4GHz radio frequency band and come pre-configured from the factory and paired to work with your XPS One right out of the box.

**Miserly** – Battery life\* is estimated at a long 4 months because the keyboard senses when it's been idle.

**Feels Good** – Rubberized soft-touch paint and palm rest makes the keyboard easy to hold or use on a desktop. A cursor pad and mouse buttons on the right and another mouse button on the left make for easy two-hand operation with or without a mouse.

**Light Touch** – The capacitive (non-mechanical) multimedia keys work like some elevator keys, giving visual feedback at the slightest touch by illuminating the key with soft blue light that matches that of similar keys on the display.



**By the Numbers** – NumLock turns alphabetical keys (789/UIO/JKL/M) into numeric keys (789/456/123/0).

**Remote Control** – In addition to controlling volume and multimedia functions, the keyboard can brighten, dim or blank the display from across the room.

**Green Button** – The green MCE Start button brings up the Windows Media Center menu to view photos, find and play music, watch and record TV shows\* (with optional tuner), download movies, or show your own home movies.



## Proximity Detection

A proximity sensor on the display almost seems to anticipate your thoughts and was inspired by the jellyfish that lights up in nature to scare off an approaching enemy.

**Capacitive Media Keys** – Bring your hand within 6-12" of the display, and the multimedia keys begin to glow. With a gentle touch, they respond to register contact in three ways: brighter glow, a pleasant sound and a haptic thump vibration that feels like someone on the other side thumped the glass as you touched it. Of course, there's no genie in there; it's done electronically. The blue lights then turn off after about 10 seconds.

**Slot-load Disc** – To the right of the media keys is a slot for loading CD, DVD or Blue-Ray discs, and the proximity sensor either lights a semicircle to show that a disc is inserted and ready to play or lights the slot for you to insert a disc.

**Go Dark** – With the Go Dark button below the media keys, you can blank the screen and enjoy music without monitor glare. Imagine placing the cool and quiet XPS One in the dining room to play background music during a formal dinner, to show TV shows during family dinners, or for shared PC use by the entire family.

**Wake Up** – The system responds instantly (less than 1 second) to wake from Windows Vista's S3 sleep state, is nearly silent and uses minimal power for music/video/TV listening and recording.



### Multimedia Controls

**Display keys** – capacitive keys for volume up, volume down, mute, play, pause, stop, skip, forward, skip reverse, eject, and LCD on/off

**Keyboard capacitive keys** – record, play, pause, stop, skip forward, skip reverse, fast forward, and fast reverse

**Keyboard media buttons and Fn+ controls** – MCE Start, volume up, volume down, mute, information, channel up, and channel down, eject, LCD on/off, LCD brightness, sleep

## Studio in a Box

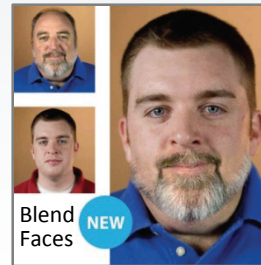
The XPS One becomes a home music, photo or video studio with **Adobe® Elements Studio**, an exclusive solution bundle for photo, music and video editing that would cost about \$400 SRP if purchased separately (\$99.99 for Photoshop® Elements + \$99.99 for Premiere® Elements + \$199 for Soundbooth™ at the time of this writing).

Put photo slideshows in motion with video-style effects and transitions; and add dramatic freeze-frame effects to video by capturing a single frame and enhancing it with text and graphics. Creatively mix still photos, motion video, sound effects, music, and voiceovers to enhance your story, and then burn copies to disc to share.

**Adobe® Photoshop® Elements 6** software combines power and simplicity so you can make your photos look their best, share them in imaginative ways, and easily find and view all your photos and video clips. Correct flaws, adjust color and lighting, drop photos into customizable layouts and web galleries, and more. And for easy access and interactive sharing capabilities, Adobe Photoshop Elements organizes your photos and videos in one central location.

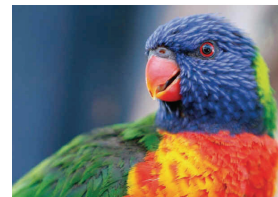
**Adobe® Premiere® Elements 4** offers a wide range of editing and sharing options to meet your needs. Bring your home video to life by easily creating a movie in minutes and show your personal style with visual and audio effects. Assemble movies by dragging and dropping clips, and upload your movies directly to YouTube™ or share on DVD, the web, mobile phones and virtually anywhere else.

With **Adobe® Soundbooth™ CS3**, you can record, mix, edit and master audio files to create music, produce radio spots and restore imperfect recordings. Smart integration with Adobe video applications makes it easier to bring video and audio together.

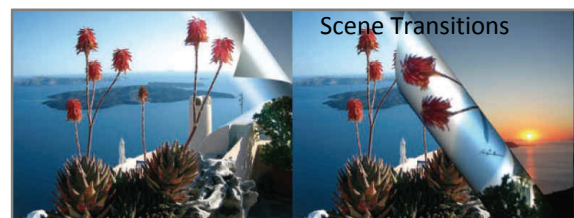


Enhance Color & Detail

Brush away wrinkles



Improve skin tones



## HD Audio, Movies and Television

The XPS One takes digital entertainment to the center stage, with support for high definition photography, music, games and television.

HDTV provides up to six times more picture information than standard-definition TV (SDTV), and XPS One can enable and enhance that HDTV experience in a number of ways:

**High-definition 20" monitor** – with 1680x1050 pixel resolution that can display movies in their native 16:9 format.

**Optional TV tuner** – to decode MPEG2/MPEG4 video and multi-channel audio with surround sound processing

- Watch TV on your terms with the ability to record, pause, rewind and replay\*.
- Watch free over-the-air TV, including digital and HDTV, without a set-top box.
- Watch cable or satellite programming with an appropriate set-top box.
- Eliminate rental and subscription fees for a DVR and electronic program guide.
- Watch TV full screen or in a window while performing other PC tasks.

**Optional Blu-ray Disc™** – with huge capacity (50GB dual layer, 25GB single layer) for feature length high-def movies. That's five times the capacity of traditional DVDs, and with the Blu-ray Disc option, you can play and burn Blu-ray Discs, DVDs and Video CDs.

**Optional Discrete graphics** – provides hardware-accelerated rendering of HD video images with astonishingly fluidity and is recommended for Blu-ray Disc.

**Broadband network support** – (both wired and wireless) lets you stream content across the Internet or around the home.



**Powerful dual-core processors** – allow the PC to run other applications while also playing high-def music and movies.

**IEEE 1394 side and rear** – ports for easy connection of SD & HD video camcorders

**Integrated speakers** are side-mounted for wide separation of stereophonic sound

**Optional sub woofer and external speakers** and support for 2.0 and 2.1 channel stereo

**Multi-channel digital surround sound** support and S/PDIF port and for external Dolby Digital or DTS decoder, satellite speakers and up to 8 audio channels

**Windows Media Player 11:** Rip CDs to PC. Download music from subscription services. Organize songs in Media Library and navigate by artist, title, track and album art. Create custom playlists. Make custom-burned Music CDs for the car, stereo, DVD player or another PC. Sync with portable players for music on the go. Stream music to PCs, digital media receivers, and other devices on your home network.

**Windows Media Center** makes watching and recording TV and home movies more fun and organizing and viewing or listening to photos and music more enjoyable.

## HD Content and Blu-Ray Disc™

As a founding member of the Blu-ray Disc Association and a major contributor to this exciting technology, Dell promotes Blu-ray Disc (BD) as the next "revolution" in optical storage.

**Uses the blue-violet laser** – (shorter wave-length) instead of the red laser used in DVDs, hence the name, Blu-ray Disc

**Offers up to 5 times the storage capacity** – of traditional DVDs – up to 25GB on a single-layer disc or 50GB on a double-layer disc – for recording, rewriting (not all discs are rewritable) and playback of high-definition (HD) movies that won't fit on a single DVD

**Features interactivity and advanced audio and video CODECs** – for an unprecedented HD experience.

**Designed for the future** – HDTV broadcasts (with MPEG2 compression) can reach 19 Mbps, but BD can support up to 48 Mbps

**Strong industry support** – over 180 of the world's leading CE, PC, music, recording media, and video game companies

**Strong studio support** – and availability of content – seven of the eight major movie studios (Disney, Fox, Lionsgate, MGM, Paramount, Sony and Warner) are releasing their new feature films in Blu-ray Disc format.

**Supports DRM content protection** – and three different industry standards for (AACs, BD+, and ROM Mark) so content owners are most comfortable with supporting this media.



**With Blu-ray Disc, you can:**

**View Hollywood movies** – with outstanding HD picture and surround sound audio quality not available on DVD.

**Interact with Blu-ray Disc movie content** – including games, Java-based menus and other special features.

**Play, read and write** – to Blu-ray discs<sup>1</sup>, DVDs<sup>2</sup> and CDs<sup>3</sup>. It's backwards-compatible.

**Burn** – music, photos, TV shows, home movies, and data backups onto ultra-high-capacity damage-resistant recordable discs.

<sup>1</sup> Up to 50 GB of storage

<sup>2</sup> Up to 8.5 GB of storage

<sup>3</sup> Up to 700 MB of storage



## HD Graphics and Video

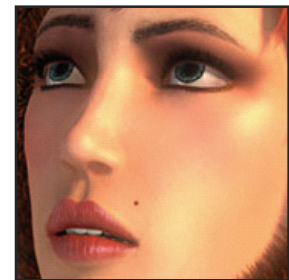
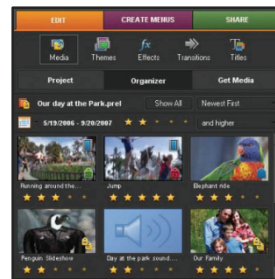
**Integrated** – The Intel® Graphics Media Adapter 3100\* provides excellent graphics performance for mainstream consumers.

- ❑ Enables Aero™, the visually stunning 3D Windows Vista® user interface
- ❑ Produces sharp images, precise color control and smooth video playback for a premium entertainment experience
- ❑ Enables HDCP (High-bandwidth Digital Content Protection) to meet the security requirements of encrypted HDTV movie content
- ❑ Supports Microsoft's DirectX® 9.0c, Shader Model 2.0 and OpenGL® 1.4 for casual use of 3D applications



**Discrete** – Select the ATI Mobility Radeon® HD X2400 option for improved HDTV playback and to speed the performance of graphic- and multimedia-intensive activities by offloading graphic tasks to a discrete graphics processor.

- ❑ Hardware decoding of video CODECs such as H.264, VC-1 and MPEG-2 for smoother video playback and offloaded CPU resources when watching movies from DVD or Blu-ray Disc™
- ❑ Supports Microsoft's DirectX® 10 for enhanced rendering of 3D images, scene lighting, geometry shading, textures, anti-aliasing and other features for stunningly realistic images that appear lifelike and virtual worlds that seem real
- ❑ Make entertainment more entertaining and games immersive and fun.



**HDTV, Video Editing, Aero™ Interface, Gaming**  
(images from Adobe, ATI and Microsoft)

## HD Home Network

With both Ethernet and Wi-Fi® included, the XPS One is ready to connect to a home network so you can share an Internet connection, printer, digital music, photos, video and TV programs, and other data files with other family members and even connect consumer electronics equipment like stereos and TVs.

**Gigabit Ethernet** – Ethernet is built-in because hardwired category 5e cabling generally offers the fastest, cheapest, most secure, and most reliable network connection compared to using wireless or existing phone or power lines.

**Wireless-N** – The XPS One takes Wi-Fi to the next level with internal Wireless-N<sup>1</sup> (based on the 802.11a/b/g/n draft 2.0 specification), which is backwards compatible with prior 802.11 standards (802.11a, 802.11b, 802.11g). The 802.11n draft standard is designed to achieve as much as 5x the throughput and up to double the range, compared to legacy 802.11 a/b/g technology<sup>2</sup>.

This level of range and throughput enables new multimedia applications, including the ability to transport High-def audio and video streams throughout the house while simultaneously accommodating data and Voice over Internet Protocol (VoIP) streams using the latest in quality-of-service and security measures.



1. Pending certification from the Wi-Fi Alliance

2. Performance claims are for comparative purposes only. Actual speed and range may be less and varies with the environment, equipment, number of users, interference, transmission barriers (e.g. walls and building material), and other factors. For more about performance claims, visit [www.wi-fi.org](http://www.wi-fi.org).



## HD Expansion

**Cut the Clutter** – With integrated Bluetooth® 2.0 and the 8-in-1 Media Reader, you can eliminate the hassle of cords and cables when exchanging digital media with portable devices like Bluetooth-enabled phones and PDAs or cameras and other devices that use flash memory cards.

And, for devices that connect with cables, the XPS One offers plenty of USB and Audio/Video ports.

**Utterly USB** – Two USB 2.0 ports are located on the side for convenient attachment of portable devices, and four USB ports are on the back, with cable-routing flaps to keep them under control.

**Ports of Call** – A/V ports offer convenient attachment of audio/video devices and include:

- Headphone/line-out, Microphone/line-in on the side
- IEEE 1394a ports on the side and in back
- 2.1 Audio out for external speakers
- S/PDIF optical in back for external Dolby Digital or DTV decoder (receiver/amplifier)
- TV in (with optional tuner)
- Connection for external puck (with TV tuner) that includes: S-video, analog RCA jacks for audio & composite video, and IR blaster



## Intel® Dual-core Processors

The XPS One is configurable for a range of applications ranging from personal productivity through demanding multimedia authoring, hosting and mastering. And with Intel® dual-core processors and the new Intel® X38 Express chipset, the XPS One can deliver high performance multimedia, entertainment and gaming with power to spare.

**Dual-core and more** – As if two central processor cores weren't enough, specialized processors (e.g. optional TV tuner and graphics card) offload work previously done by the main CPU, freeing the CPU for other tasks.

You can now watch TV on the PC, edit home videos, burn optical discs, or download music while security software continues to watch for malware and critical data is backed up. With multiple processors working on your behalf, the computer is less likely to bog down while one task waits for another to complete.

**More powerful and more energy efficient** – Intel's dual-core processors are designed to be more energy efficient, consuming less energy and generating less heat than their single-core predecessors, meaning that not only is your energy bill lower; fans don't have to work as hard, and the system runs cooler and quieter.

### A Choice of Intel® Processors

- Intel® Core™ 2 Duo up to 1333 FSB and 45W
- Intel Celeron® offered in Japan
- Intel X38 Express chipset

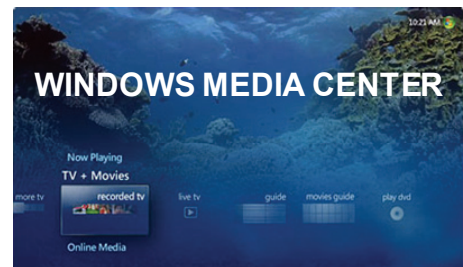
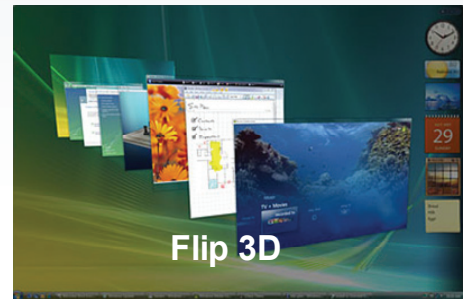


## Genuine Windows Vista®

Get ready to improve the way you work, learn, play, communicate and create, with a whole new way to manage your work, memories, music and your life.

All XPS One systems have been designed to optimize the breadth of choices available through Microsoft® Windows Vista® Home Premium, including:

- New Aero™ interface with translucent windows and Flip 3D window navigation.
- New tools to help you organize and find your music, photos, videos and documents.
- New security options and Parental Controls to help keep your PC and family safe online.
- Windows Photo Gallery for easy searching, editing and sharing of photos.
- Windows Media Player for the casual enjoyment of music and movies
- Windows Movie Maker for quick and easy editing of home movies
- Windows DVD Maker for burning videos to disc with chapters, titles, and transitions
- Windows Media Center helps you manage video, audio and TV and, with a Media Center Extender on a home network, extend that functionality throughout the house.
- New DirectX 10 interface for more realistic games
- Network backup and restore
- New support for Sidebar and Sideshow gadgets



## Whole-Home Theater

The XPS One can function as a home server and centerpiece of a digital home network ecosystem and whole-home theater experience.

Its large HDD storage capacity and support for home and broadband networks that can stream content around the home or across the Internet is enhanced by a number of integrated features and optional peripherals.

- ❑ **Gigabit Ethernet** is a standard feature of the XPS One
- ❑ **Wireless-N** (IEEE 802.11a/b/g/n Draft 2.0) is standard, integrated and ideal when running special wiring is not an option
- ❑ **Windows Media Center** (part of Microsoft® Windows Vista® Home Premium) includes Home Server functions
- ❑ **Electronic Program Guide** lifetime subscription with Windows Media Center
- ❑ **Stream video** content throughout the home via digital media adapters such as Xbox 360™
- ❑ **Stream outside** of the home with a broadband connection and Slingbox™ Pro from Sling Media, Inc. (available in the US at Dell.com).
- ❑ **TV Tuner option** lets you receive broadcasts over-the-air or over cable, digital cable, satellite, etc.
- ❑ **View & time shift** television programming
- ❑ **Sync to portable devices** (notebook PCs, phones, PDAs, MP3 players)
- ❑ **Manage content** (photo, music and video) stored on HDD or burn it to disc (CD, DVD, Blu-ray Disc™)



Parental controls, included with Microsoft® Windows Vista® Home Premium, give parents the ability to limit the times and hours that children spend on PCs, as well as filter the sort of content, games and web sites they can access. These controls can help relieve worries about unsupervised PC use when the parents can't be there personally. Although not a substitute for parental guidance, these controls can also help parents justify buying a networked PC for each child, since many have noticed that a home PC helps their kids gain a competitive advantage at school.

## Turn On and Tune In

With the power of Microsoft® Windows® Media Center (part of Microsoft® Windows Vista® Home Premium) and an optional TV tuner, access FREE local HD TV and watch, pause and record television\* programming with a few easy clicks.

With the XPS One wireless keyboard or the Media Center remote control that comes with a TV tuner, you can use the Green Start Button on the keyboard or remote to access Windows Media Center from the comfort of a sofa across the room and view photos, find and play music, watch and record TV shows\*, download movies, or show your own home videos.

And, with a networked digital media adapter such as Xbox 360™, extend that experience to TV sets anywhere in the home.

### MCE Remote (with TV tuner option)

- Navigate the MCE interface from across the room with infrared transmitters.
- Includes a cable-connected TV Input Device with S-Video and analog A/V ports and IR blaster.

### Keyboard with MCE button & Media Keys

- Wireless (RF) keyboard has up to 5m range and contains a subset of MCE remote functions.



## Listen Up

The XPS One features Intel® High Definition (HD) Audio and 10 Watt speakers (5W each) for 2.0 channel stereo music and sound. The speakers are positioned at the sides of the display instead of underneath to widen the stereo imaging effect and enhance the visual widescreen digital cinema aesthetics. This wide stereo separation helps reproduce a lifelike music listening experience at a casual, lean-back distance of 3'-5' from the display, which is also optimal for a theater-like movie experience, with the viewing distance about 1.5 times that of speaker separation.

The XPS One also includes a digital S/PDIF port for a multi-channel surround system using an external Dolby Digital or DTS decoder (amplifier/receiver).

The selection of external speakers and headphones depends on many factors, including the application, room size, and personal preference, among others. Popular options vary by region and include:

- ❑ **The in-ear earbuds** that are included with each XPS One sold in the US offer excellent noise isolation and high-quality audio reproduction with extraordinary bass.
- ❑ **Optional BH200 Bluetooth® 2.0 EDR** stereo headset is a wireless option that features active noise cancelling and exceptional fidelity with the freedom to move about the room.
- ❑ **Optional Bose® Companion® 3 Series II** is a 2.1 multimedia speaker system that connects to the 2.1 Audio Out port and delivers striking clarity, depth, and top-of-the-line stereo performance with added spaciousness, thanks to an Acoustimass® module (subwoofer) and proprietary TrueSpace® technology. A desktop control pod houses volume control, mute button, headphone jack and port for connecting a second audio source such as an MP3 player.
- ❑ **Optional Dell WL6000** is a 100W 5.1 surround speaker system with a subwoofer and 5.8 GHz wireless rear satellite speakers, perfect for DVD movies, gaming, music and multimedia.



In-ear earbuds



BH200 Bluetooth® Stereo Headphones



BOSE® Companion® 3



Dell WL6000



Roku SoundBridge



Microsoft® Xbox 360™

'Need more options? 'Want to connect to a home theater system or whole-house stereo system? Consider adding a Roku SoundBridge or Microsoft® Xbox 360™.

## Surprise Me

When the XPS One arrives, relish in the attention to detail to the little things like packaging and the XPS Accessory Kit.

And then enjoy a delightful XPS user experience that starts as you first turn it on and continues through premium service and support.

### XPS Accessory Kit:

- ❑ **XPS Binder, Wipe Cloth and Mouse Pad**
- ❑ **XPS Audio Earphones** – designed with ergonomic soft silicon in-ear noise isolation and offers high-quality audio reproduction with extraordinary bass ideal for digital music playback
- ❑ **Owner's Manual** – provides information on using your computer, installing parts such as memory modules, configuring drivers and utilities, using the system setup program, and using devices
- ❑ **Product Information Guide** – provides safety precautions and information about contacting Dell
- ❑ **Getting Started Placemat** – provides step-by-step instructions for connecting your computer (not available in all regions)



## Out-of-Box Experience

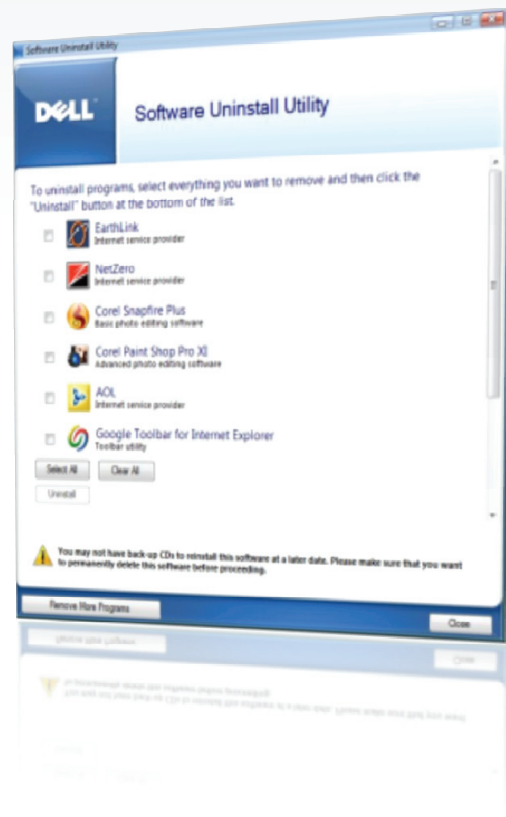
Dell is committed to providing a great customer experience out-of-the box experience with optimized initial set up, software category folders, and software optimization for the system.

Dell provides customers with choices that can make finding and using software easy – starting at point of purchase and throughout the overall software experience.

Software installation is customized for each order, per customer's choices. The customer is given opt-out choices at the point of sale for wide variety of factory installed software, such as productivity, security, entertainment and ISP offers

Easy Software Set-up via Dell Welcome makes your first boot experience fast and easy. Use the Dell Welcome wizard to perform critical initial tasks including data migration, security set-up, getting online, learning about Sidebar and Sideshow Gadgets, or getting help

Cut desktop clutter and maximize software discovery with Dell's convenient Software Category folders. These folders not only group like software categories, but they also provide an explanation of what each application does and provides an easy path to remove unwanted pre-installed software with Dell's convenient software uninstaller tool.





## Security and Anti-malware Software

Get Comprehensive Protection Right Out of the Box.

In today's world, multiple layers of security software protection are essential to safeguard computer data. Through regular use of scheduled virus scans, blocking hackers with a firewall, and safeguarding sensitive information with privacy software, Dell partnered security suites offer a high degree of data security as well as peace of mind.

Dell partners with top-tier security suite providers and these partnerships allow Dell to offer "best of breed" security suites pre-installed. Dell pre-installation means the security suite is ready to protect new Dell PCs the moment our customers begin using their computer.

Dell security suite solutions may vary by region and include: Norton Internet Security, McAfee Security Center, and Trend PC-Cillin. All suites offer Comprehensive Security: Anti-Virus, Spyware Protection, Firewall, Privacy Services, and Parental Controls.

XPS systems come standard with a 15-month initial subscription with optional upgrades to 24-month and 36-month subscriptions\*.



## Service and Support

### Taking the worry out of computing

The XPS One experience includes the whole package and extends beyond top-of-the-line PC hardware to also include expert buying assistance, flexible limited warranty options\*, dedicated 24x7 XPS telephone support technicians, and a portfolio of support tools that are designed to improve the performance, utilization and security of your data, systems, applications and peripherals. That's the XPS difference.

Dell's portfolio of smart, automated and preventive support tools help simplify service delivery and can improve the performance, utilization and security of our Customer's data, systems, applications and peripherals. Standard services include: Dell Support Center 2.0, PC Checkup, and DellConnect.

- Automated** – Offers personalized, hands-off, complete system support
- Responsive** – Anticipates and solves issues before they become a problem
- Trusted** – Retains peak system performance without the worry
- Smart** – Provides Intelligent tools to identify the unique needs of your system
- Complete** – Covers all aspects of your system's required maintenance
- Control** – Offers complete control over the upkeep and performance of your system

Simple and comprehensive service plans can provide you peace of mind, and Dell's online store guided paths help you choose the right kind of service that fits your needs.

If you need to contact a support associate, XPS Service professionals are available 24/7 and, if necessary, can even come to your home or help you over the web, phone or email. If applicable, a Dell technology expert can remotely access your PC to help diagnose and resolve PC problems.



## Dell Support Center 2.0

### Personalized Services... Simplified

Quickly access personalized service and support resources, including self-help tools, system-specific information, drivers and downloads, and links to other Dell support resources with Dell Support Center 2.0.

Get peace of mind, knowing that your system is constantly monitored, with the ability to pinpoint and help fix common system issues, should they occur.

Dell Support Center now includes a new, proactive “alerts” feature, which informs you about critical system updates and upgrades, as well as a hardware diagnostic tool (PC Checkup), that analyzes your system’s health, (including peripherals and network devices), and provides troubleshooting guidance and system information relevant to diagnosing and resolving your system issues.

- Easy to Use** – Conveniently located on desktop with quick links to service, support and system resources
- Flexible** – Choose the support you need via email, phone, chat or online information and tools
- User tailored** control of settings defining the level of support desired
- Informative** – Automatically locates system-specific information, including service tag, PC model, express service code and limited warranty\*
- Convenient** – Provides personalized resources and answers to computing and technical issues, including downloads and drivers, training and technical support

The Dell Support Center comes standard on your new Dell XPS system. Learn more by visiting [www.dell.com/dellsupportcenter](http://www.dell.com/dellsupportcenter).



## DellConnect™

### Like Private Lessons with Dell Technicians

To help identify and fix issues, the Limited Warranty\* includes the use of DellConnect, an online tool that helps simplify troubleshooting and repair by enabling a highly skilled XPS service expert to remotely access, diagnose and support PC issues over the Internet.\*

DellConnect provides a technician with the ability to help diagnose system issues, resolve technical problems and/or educate customers. Customers are empowered as they “watch and learn” during their secure session. Customers can see what’s happening at all times and can even stop the process instantly if they so choose.

DellConnect is a simple online access tool that allows a Dell service and support associate to access your computer through a broadband connection, diagnose your problem and repair it. All under your supervision. So you decide what we see, where we go and what we do. It’s like we’re right there with you but we’re not.

To use this service you must have a high speed (broadband) connection and your Dell PC must still be under warranty. DellConnect is also available for “How To” services offered through Dell On Call.

See [www.Dell.com/DellConnect](http://www.Dell.com/DellConnect) for details.



## Dell DataSafe™ Online

### A Safe Deposit Box for Memories, Music & More

Dell DataSafe™ Online Backup & Sharing is an automated online backup and recovery service that can protect your data against catastrophic site failure (fire, theft, hurricane, etc), as well as hardware and software errors. Using an Internet connection you can access a secure, remote storage site, which allows you to back up critical data or share files.

- ❑ **Makes data backup easy** – Set up and forget it for continuous data backup and protection against software, hardware and catastrophic failure
- ❑ **Offers secure backup** – Only you have access to your data with a private key
- ❑ **Provides flexibility** – Allows you to access your data virtually anytime, anywhere
- ❑ **Enables sharing** – May also be used for sharing of selected files with friends and family

**Off-site backup protection** – With this feature, even if your hard drive crashes, a virus infects your system, or a fire or natural disaster destroys your home, your data will be safe because Dell DataSafe Online automatically backs up user data to a remote location based on a specified schedule. If your data is backed up daily, should a calamity occur, only one day's worth of data would be lost.

- ❑ 1-year complimentary subscription for 10GB of storage provided for Free (in US and Canada only)
- ❑ Option to upgrade for a fee to 10GB, 20GB, 30GB, 50GB and 100GB packages at \$19, \$29, \$39, \$59 and \$119 per year, respectively

Visit [www.dell.com/DataSafe](http://www.dell.com/DataSafe) for more details.



## Dell PC TuneUp

### Once a month for peak performance

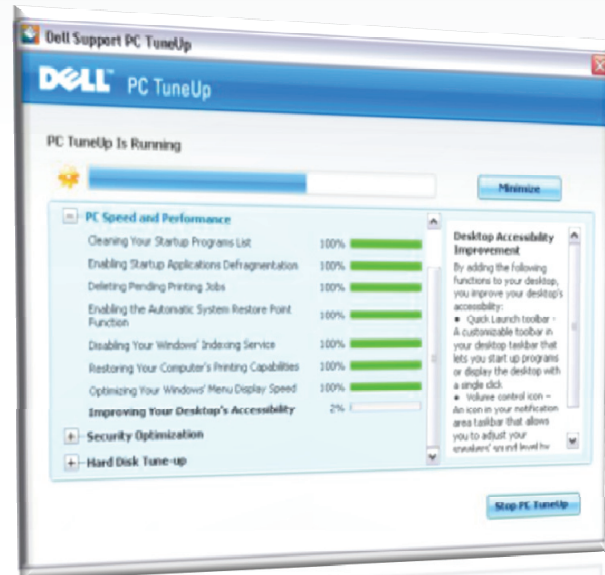
Your PC, like a car, should be regularly tuned up to optimize its performance and security.

An optional support feature is Dell PC TuneUp, which runs on your PC once a month on a day and time of your choosing, such as the first of the month at midnight. This fee-based service helps:

- ❑ **Optimize** - Helps ensure your PC's performance and ability to quickly boot by defragmenting your hard drive, removing unwanted or corrupt programs or files, upgrading firmware and BIOS, removing pop-ups and repairing network issues.
- ❑ **Protect** - Designed to identify and protect against spyware and viruses on your PC by removing unwanted pop-ups, adding the latest security patches, and enabling security features.
- ❑ **Diagnose** - Able to diagnose potential problems and help provide real-time fixes to your PC issues.
- ❑ **Maintain** - Schedules monthly tune-ups to help ensure optimal performance for your PC.
- ❑ **Restore** - Helps restore computer to best known state by creating good "restore points" that simplify restoring OS and applications following a system crash.
- ❑ **Discover** - Provides you with PC best practices along with a summary of the before and after service state of your PC including what fixes were done during the PC TuneUp.

Once you've selected the day of the month on which you want your PC tuned up, you can relax, knowing your system is routinely checked for performance and security issues. Dell PC TuneUp can automatically fix many identified issues or produce a report that indicates what needs to be done on your system to keep it operating at peak performance.

Visit [www.dell.com/pctuneup](http://www.dell.com/pctuneup) to learn more.



# Dell CompleteCare™ Accidental Damage Service

## ... because accidents do happen

You spill coffee on your system. Knock over the desktop while moving furniture. Or an electrical surge destroys your hard drive. That's why CompleteCare Accidental Damage Service\* makes sense and is a great way to protect your investment.

## What is CompleteCare Service?

CompleteCare covers most non-intentional, accidental damage including electrical surges, drops and liquid spills. When an accident occurs, Dell repairs or replaces the damaged system, minimizing out-of-pocket spending.

## How does CompleteCare Service work?

If an incident occurs, you can call Dell's technical support line to report the problem. Dell technicians will ask you a series of questions designed to determine the extent and cause of the damage or failure. Depending on your system type, the cause and extent of damage, and other service options that you have purchased, Dell will initiate appropriate repair or replacement services.

## Why is CompleteCare Service important to have?

When your system is damaged by a liquid spill, dropped, broken or compromised in other manner, CompleteCare is designed to provide a rapid response and resolution such as repair or replacement. And because CompleteCare is a separate service agreement that augments the Dell Limited Warranty\*, it is available for 1, 2, 3 or 4-year terms.



# Dell on Call

## The 21<sup>st</sup> Century House Call

Why take your PC to the shop when the shop can come to you? With Dell On Call, everything is done from the comfort of your own home. And best of all, it's done when the time is right for you so there's no more waiting around for someone to show up. That's the Dell Difference.

HelpDesk Services (Dell On Call\* in the US, Presto in EMEA, and HelpDesk in Asia Pacific) are designed to help you resolve your most common technology issues ranging from "how to" software support to spyware removal, setting up and using the Internet, and even help connecting a digital camera.

Available at point of sale or point of need (single-call pricing or renewable one-year plan), Dell on Call provides round-the-clock phone support for common technology issues that fall outside the Dell hardware limited warranty\*. Combined with warranty support that covers parts failures, Dell on Call gives you the single support solution you want and expect from Dell.

To more efficiently and rapidly identify and solve systems problems, Dell on Call can use DellConnect™\*, a tool that enables service professionals to remotely view and support your PC via an Internet connection.

## Installation Assistance

Dell on Call provides the guidance you need to set up new software and popular electronics such as a digital camera or optical mouse.

## Software Support

Whether you wish to back up your data, need help with a troublesome spreadsheet, or wish to learn how to record your favorite TV show on to your new Dell system, our experts are available for a simple reminder or a quick lesson.

## Virus and Spyware Troubleshooting

If your computer is running slowly, your screen is full of frustrating pop-ups, or you think your computer is infected with a virus, we offer full service assistance to help clean up your computer and teach you how to protect against future attacks.

To find out more, visit [www.dell.com/dellconnect](http://www.dell.com/dellconnect)





## Dell Network Assistant

An easy-to-use application, Dell Network Assistant provides you with tools designed to set-up, monitor, troubleshoot, repair, and manage your home and small office networks.

Networking is becoming more complex with more wired and wireless devices linked together. Dell Network Assistant can simplify keeping track of these devices by providing a visual display of network status. Other benefits can include:

- Setup wizards** – offers assistance for common tasks like folder and print sharing
- Connection tools** – identifies and monitors devices connected to customers' networks
- Auto-repair advisor** – pinpoints and fixes connection issues when they occur
- Tutorials and FAQs** – helps you learn how to better utilize Dell Network Assistance and manage your networks

Dell Network Assistant can be purchased with your system or you can see a demo and download a no-cost 90-day trial at [www.dell.com/networkassistant](http://www.dell.com/networkassistant).



## Dell Recycling

Dell Recycling\* is part of our continued commitment to our customers and our planet. As personal computers have become common in most homes, there is a growing concern about the environmental impact of old computers, computer parts and other electronic products. We help make sure all recycled PCs and electronics are disposed of safely. You may also choose to donate your old system to the National Cristina Foundation, helping disabled and economically disadvantaged Americans receive recycled PCs.

No need to wait! If you don't want to wait for your new system to arrive before you recycle your old system, request a recycling kit from your sales representative while building your new PC.

### How do I send my old PC back?

With the recycling option, your new PC will include a Dell Recycling envelope with a kit containing 2 pre-paid air bills and instructions on how to pack and ship your old equipment. You will need to provide your own box and packing materials. Make sure you clear all your personal data from your old system and pack the old computer and/or monitor in a sturdy box - it could be the box that your new Dell system arrived in. (Please note that the box should be appropriate for the system you're planning on recycling. Please don't try to place a monitor into a notebook shipping box.) Apply the shipping labels (one for your system box, one for your monitor box) to the outside of the box and cover or remove other shipping labels already attached. You'll find the recycling labels in the Dell Recycling kit envelope that came with your new system.

### Who will pick up my old PC?

Follow the instructions inside the Recycling envelope to schedule a convenient pick-up time online or by phone with DHL/Airborne.

Leave the box outside in a visible location for pick up. You may also choose to donate your old PC and monitor to charity. Dell has partnered with the National Cristina Foundation (NCF) to help America's disabled and economically disadvantaged children and adults receive the gift of technology.

For more information visit [www.dell4me.com/recycling](http://www.dell4me.com/recycling).



## Product Gallery



# Product Gallery – Finished Back



# Product Gallery – Tilt / Air Vents to Top

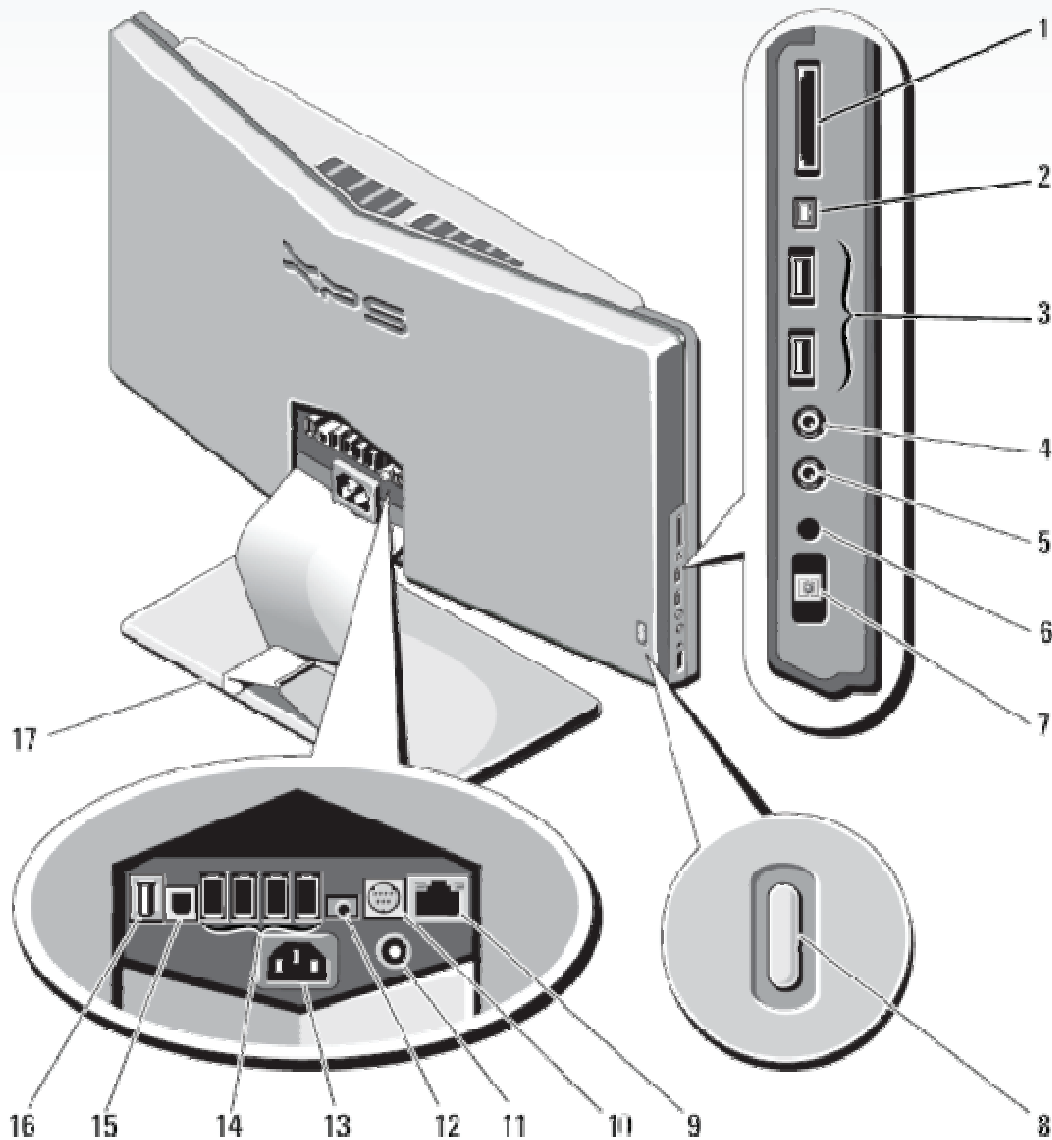


# Product Gallery – TV Input Device (with TV tuner)



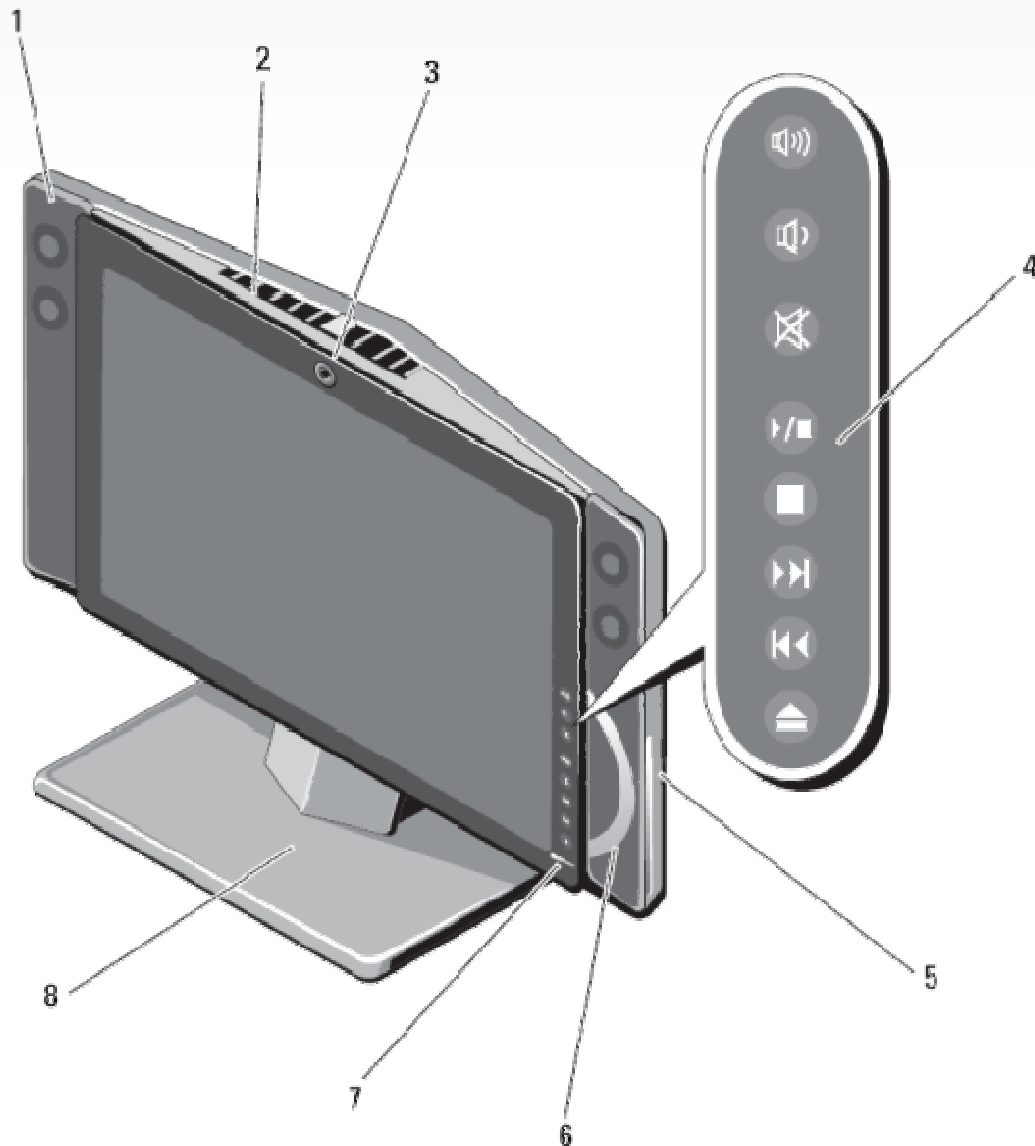
IR Blaster

## Product Gallery – Back & Side Details



- |                                      |   |
|--------------------------------------|---|
| 1. Media Card Reader                 | 9. Gigabit Ethernet Network connector (RJ-45) |
| 2. Mini (4-pin) IEEE 1394a connector | 10. Optional TV Input Device connector        |
| 3. USB 2.0 connectors (2)            | 11. Optional TV input connector (coax)        |
| 4. Headphone / Line-out port         | 12. 2.1 Audio Out                             |
| 5. Microphone / Line-in port         | 13. Power connector                           |
| 6. Drive Activity light              | 14. USB 2.0 connectors (4)                    |
| 7. Power button / light              | 15. S/PDIF connector                          |
| 8. RF Pairing button                 | 16. IEEE 1394a connector                      |
|                                      | 17. Cable Routing flaps                       |

## Product Gallery – Front Details

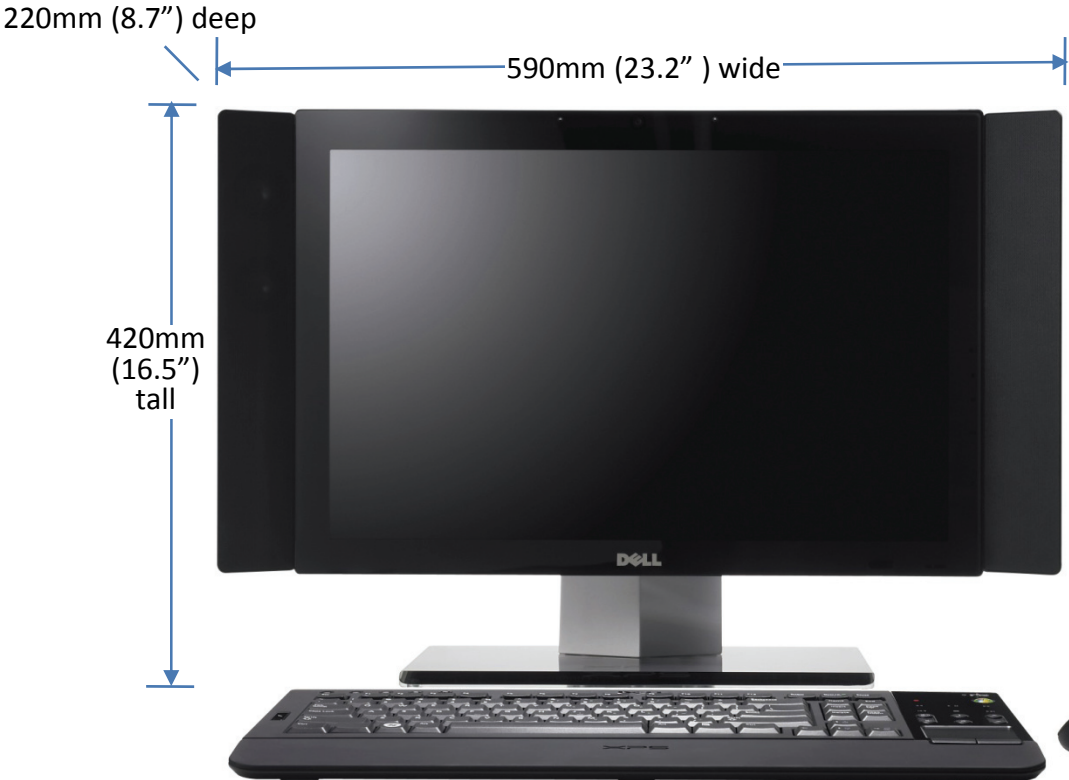


1. Speakers (2.0 channel stereo, 5W each)
2. Air vents
3. 2M pixel camera and microphone array
4. Media Control keys
5. Disc slot (CD, DVD, Blu-ray Disc™)
6. Disc Indicator light (illuminates when disc inserted)
7. Display Power On/Off (without disrupting PC status)
8. Display Stand



# Product Gallery – Weight & Dimensions

Typical Weight: 10kg (22lbs)



## Technical Specifications

Chassis & Case	
Form Factor	Small footprint All-in-One, finished on all sides, and designed to fit under standard US kitchen cabinetry. XPS logo on top and glass base
Dimensions	590mm x 420mm x 220mm (23.2"W x 16.5"H x 8.7"D)
Weight (typical)	10Kg (22 lbs)
Power & Thermal Management	200 Watts. No venting on front, back or sides. Cool air enters from bottom, and warm air exits on top.
Network and I/O Ports	<ul style="list-style-type: none"> <li>• RJ-45 jack in back for Gigabit Ethernet (1) 1000BASE-T</li> <li>• USB 2.0 (6) 2 side, 4 back</li> <li>• IEEE 1394a (2) mini 4-pin connector port on side, 6-pin in back</li> <li>• S/PDIF (1) in back</li> <li>• 2.1 Audio Out in back</li> <li>• Microphone / Line-in on side</li> <li>• Headphone / Line-out on side</li> <li>• TV-in coax connector in back (with optional TV tuner)</li> <li>• Connector for cabled TV Input Device (with optional TV tuner)</li> <li>• S-video, analog RCA jacks for composite video &amp; audio, and IR blaster in TV Input Device (with optional TV tuner)</li> </ul>
8-in-1 Media Reader (side)	<ul style="list-style-type: none"> <li>• Secure Digital (SD) memory card</li> <li>• SDIO card</li> <li>• MultiMediaCard (MMC)</li> <li>• Memory Stick</li> <li>• Memory Stick PRO</li> <li>• xD-Picture Card</li> <li>• Hi Speed-SD</li> <li>• Hi Density-SD</li> </ul>
Security	Cable lock chassis security slot

### Chipset & Processor

Chipset	Intel® G33 Express
Processor (CPU)	Intel® Core™ 2 Duo processors (E6550 & E4500) up to 45W Intel® Celeron® (440) offered in Japan

	Clock Speed	Front-side Bus	L2 Cache	Processor Cores	Viiv™
<b>E6550</b>	2.33 GHz	1333 MHz	4 MB	2	Yes
<b>E4500</b>	2.2 GHz	800 MHz	2 MB	2	Yes
<b>Celeron® 440</b>	2.0 GHz	800 MHz	512K	1	No

Source: Intel® Core™2 Duo Features & Benefits: <http://www.intel.com/personal/our-technology/core2duo/in-depth.htm>

### Operating System

Microsoft® Windows Vista® Home Premium

## Technical Specifications, cont.

### Memory

Memory Type	667 MHz Dual-channel Dual DDR2 SDRAM
Memory Capacity	Minimum 1 GB (2 512 MB DIMMs), Maximum 2 GB
Memory module connectors	DIMM connectors (2), installed in pairs

NOTE: The available memory displayed does not reflect the complete maximum memory installed because some memory is reserved for system files.

### Hard Disk & Optical Disc Capacity

HDD options	<p>Single 3.5" internal HDD bay with support for SATA-II drives (3GB/sec, 7200 RPM with Data Burst Cache)</p> <ul style="list-style-type: none"> <li>• 250 GB* w/ 8M Cache</li> <li>• 320 GB* w/ 16M Cache</li> <li>• 500 GB* w/ 16M Cache</li> </ul>
Optical Disc Options	<p>Single 5.25" slot-load optical drive bay with support for slim-height SATA drives</p> <ul style="list-style-type: none"> <li>• DVD+/-RW (reads &amp; writes CDs and DVDs) as standard</li> <li>• Blu-ray Disc™ (reads &amp; writes CDs, DBDs and high-capacity Blu-ray discs) optional replacement. Blu-ray Disc capacity is up to 25 GB single layer, 50 GB double layer)</li> </ul>
External Connections	Additional drives can connect 1394 and/or USB 2.0 ports.

### Display

Viewable Area	20" diagonal, Widescreen
Pixel Resolution	High-definition: WSXGA (1680x1050) with 16.7M colors
Display Qualities	<ul style="list-style-type: none"> <li>• Bright screen with fine dot pitch,</li> <li>• High contrast (1000:1 typical),</li> <li>• Fast response rate (5ms typical, for fast motion), and</li> <li>• Wide viewing angle (up to 80 degrees)</li> </ul>
Display Features	<ul style="list-style-type: none"> <li>• Bezel-less edge-to-edge tempered glass front</li> <li>• Integrated 2M pixel webcam that lights up when in use (for video calls, audio/video capture and video email attachments, active avatars, and audio taunts during game play)</li> <li>• Omni-directional microphone array to help reduce acoustic echoes and background noise</li> <li>• Tilts for easy viewing (5 degrees back to 25 degrees forward)</li> </ul>
Proximity Detection	Motion sensor lights capacitive keys, Go Dark button and slot-load disc drive as you hand approaches within 6-12", and the keys respond with light, sound and a vibrating "haptic thump."

## Technical Specifications, cont.

### Video & Graphics

	Integrated Intel® Graphics Media Accelerator 3100*	ATI Mobility Radeon® HD 2400* option
<b>Memory</b>	Shared (UMA <sup>1</sup> )	128MB
<b>Connectors</b>	N/A	N/A
<b>Interface</b>	Mobile PCI Express Module (MXM <sup>2</sup> )	Mobile PCI Express Module (MXM <sup>2</sup> )
<b>TV &amp; HDTV on PC</b> (camcorder, off-air, cable/satellite set-top box, DVD, download)	Yes	Yes (better option for HD)
<b>Blu-ray Disc™ Decoding</b>	Not Recommended	Yes
<b>Microsoft® Windows Vista® Aero™ 3D User Interface</b>	Yes	Yes
<b>Productivity, Music, Photos, Communications, Web</b>	Best Value	Overkill (negligible benefit)
<b>Video Editing</b>	Yes	Yes (better option for editing)
<b>Gaming / 3-D</b>	Microsoft® DirectX® 9.0c, Shader Model 2.0, OpenGL® 1.4	Microsoft® DirectX® 10.0, Shader Model 4.0, OpenGL® 2.0

### Optional TV Tuners<sup>3</sup>, Remotes and TV Input Device

Hybrid TV tuners can be configured for either analog or digital reception (in standard or high-definition resolution).

- Americas: Hybrid NTSC/ATSC
- Japan: Hybrid NTSC/ISDB-T (seg 13) + BCAS
- Europe/Japan: Hybrid PAL/SECAM/DVB-T

TV Input Device (with tuner)

- Single cable to systems unit
- Input ports for S-Video, composite video and L/R audio
- IR blaster connector additional cable can change channels on external set-top box and would attach via adhesive

Integrated IR receiver in the display enables standard Media Center functionality and IR learning modes.

<sup>1</sup>. UMA: Unified Memory Architecture is a computer memory architecture that allows the graphics processing unit to share system memory.

<sup>2</sup>. MXM: Mobile PCI Express Module is an interconnect standard for graphics options (XM graphics modules)

<sup>3</sup>. TV Tuner: Over-the-air HD varies with region. Please check with local broadcaster for available HD over-the-air content in your area. A cable cob or satellite set-top box is required in order to watch digital cable or satellite channels. Analog cable TV requires a monthly subscription to be paid by the customer to their cable operator. Analog and digital over-the-air is free.

## Technical Specifications, cont.

### Communications: Broadband and Home Networking

Wired	Integrated Gigabit Ethernet (10/100/1000BASE-T)
Wireless	Dell-branded and internally installed Wi-Fi® (based on the 802.11a/b/g/n draft 2.0 specification) Bluetooth® 2.0 wireless technology for convenient device attachment

### Built-in Audio support and 2-channel Stereo Speakers

Audio Support	Integrated Intel® 7.1 channel High Definition Audio
Integrated Speakers	2.0 channel stereo speakers (5W each), positioned at the sides of the display for wide stereo separation
Optional External Speakers	<ul style="list-style-type: none"> <li>External speakers can connect to the 2.1 Audio Out port for even wider separation of stereo and configured to receive the full range of audio and bypass the integrated speakers.</li> <li>A subwoofer can be connected to the 2.1 Audio Out port and configured to work with the integrated speakers and receive low frequency audio.</li> </ul>
Multi-channel Digital Surround Sound	Optionally connect satellite speakers and an external Dolby Digital or DTS decoder (amplifier/receiver) to the S/PDIF out port for immersive surround sound and to bypass the integrated speakers.
Included Audio Software	<ul style="list-style-type: none"> <li>Microsoft® Windows Media Player 11</li> <li>Yahoo! Music JukeBox 2.0 v10</li> <li>Adobe® Soundbooth™ CS3 (for music editing)</li> </ul>

### XPS One Keyboard & Mouse

The design-matched wireless (RF) keyboard and mouse are pre-paired at the factory (pairing instructions underneath)

- Full size QWERTY keyboard with numeric keys and standard desktop pitch slides under system for stowage
- Keyboard designed for use with or without a mouse (cursor control pad and mouse buttons on left & right)
- Capacitive multimedia keys and MCE TV Guide button
- 5m range and power-save feature for estimated 4 month battery life
- Rubberized Soft-Touch paint
- NumLock turns alphabetical keys (789/UIO/JKL/M) into numeric keys (789/456/123/0).

## Important Information

**CompleteCare Accidental Damage Service:** CompleteCare service excludes theft, loss, and damage due to fire, flood or other acts of nature, or intentional damage. Customer may be required to return unit to Dell. For complete details, visit [www.dell.com/servicecontracts](http://www.dell.com/servicecontracts).

**DellConnect:** DellConnect may not necessarily be used for every incident. High-speed Internet (broadband) connection required. Go online for details at [www.dell.com/dellconnect](http://www.dell.com/dellconnect).

**Dell On Call** [Presto or HelpDesk] Phone Support: To view important service information including a list of supported products and issues, see [www.dell.com/delloncall](http://www.dell.com/delloncall). Please note that Supported Products or Issues may change at any time without notice to Customers. Phone based troubleshooting and hot-to questions only; onsite assistance, repair services or parts not covered.

**Dell Recycling:** You are responsible for the deletion of all data that may be contained on the computer hardware. Dell is not responsible for any data left on the hard drives.

**Dell's Limited Warranties:** For copy of limited warranty, write Dell USA L.P., Attn: Warranties, One Dell Way, Round Rock, TX 78682 or visit [www.dell.com/warranty](http://www.dell.com/warranty).

**System Memory & Graphics:** Your graphics solution may use a portion of your system memory to support graphics, depending on operating system, system memory size and other factors.

**Hard Drives:** For hard drives, GB means 1 billion bytes and TB equals 1 trillion bytes; actual capacity varies with preloaded material and operating environment and will be less.

**In-home Service:** May be provided by third-party. Technician dispatched if necessary following phone-based troubleshooting. Availability varies. See [www.dell.com/servicecontracts](http://www.dell.com/servicecontracts) for details.

**Keyboard Battery:** Actual battery life will vary based on configuration, usage and manufacturing variability.

**Security Subscription:** Standard subscription is for 12 months. This 15-month offer allows you to take full advantage of the free 90-day trial period that comes standard with your system purchase. This offer is only available when purchased at point of sale and is not available after you receive your system.

**TV Functionality of Windows Vista®:** Windows Media Center is available only in Windows Vista™ Home Premium and Windows Vista™ Ultimate. TV playback and recording features require an integrated or external USB TV tuner. May not be compatible with all cable systems and local broadcast signals. For full functionality of Windows Media Center, Internet access is required.

Copyright 2007 Dell Inc. All rights reserved. Intel, Celeron, and Core are trademarks or registered trademarks of Intel Corporation or its subsidiaries in the United States of America and other countries. Microsoft, Windows, and Windows Vista are registered trademarks of Microsoft Corporation. Other trademarks or trade names may be used in this document to refer to either the entities claiming the marks and names or their products. Dell disclaims proprietary interest in the marks and names of others. Reproduction in any manner whatsoever without express written permission from Dell Inc. is strictly forbidden.

## Return Information

Dell Inc. provides this equipment for evaluation purposes only.

All equipment must be returned to Dell Inc. in good working condition. Equipment must be in its original box, including all packaging, documentation, cables, and diskettes.

This equipment remains the property of Dell Inc. unless paid for in full by the evaluator. Dell Inc. reserves the right to collect from the evaluator the full retail value of the equipment if not returned promptly and in good working condition on or before the due date.

Please contact Julie Metting to set up a return for this system.

Julie\_metting@dell.com

512-728-3672





